

Testing:

Once connected to the 240V mains supply, the unit must be allowed to charge the battery for at least 24 hours. Conduct the following tests:

- For the first test, the emergency lamp must remain illuminated for at least 2 hours after disconnection from the mains supply.
- Subsequent tests require the unit to illuminate for at least 90 minutes. The results of all tests are required to be recorded in a service logbook, which is to be kept on-site at all times. If the unit fails to remain illuminated for the requisite time, remedial action must be taken to repair the situation and once completed, the unit must pass a subsequent test. For more specific information, please refer to the current edition of the AS 2293.3 Standard.

Ultrablade Maintenance:

LED Lamp Replacement:

- Use only the LED Strip recommended in the Spares Parts list of this instruction.
- Disconnect battery from LED driver.
- Remove the screw holding the driver PCA. Remove the PCA.
- Remove the 4 screws holding the battery bracket. Remove the bracket with the battery.
- Disconnect the signal cable from LED strip.
- Remove 4 self-tapping screws and unclip the LED strip.
- Install the new LED strip following the above procedure in reverse.

Battery Replacement:

- Use only the battery recommended in the Spares List on this instruction.
- Remove the battery from battery compartment, un-plug the lead from the battery connector remove the old battery.
- Plug the new battery into the battery connector.
- Secure the battery into the battery compartment

Rated Emergency Lumen Output in accordance with AS2293.1 (refer to spacing tables for installation positions), not Included –TH version:

C0=E6.3 (8m) C90=E6.3 (8m)

Caution:

On many building sites, power circuits may be cut off in an uncontrolled and repetitive basis during construction. As a result, any Exit & Emergency Units, on these circuits, will have their batteries discharged or "cycled". The battery in this fitting has been selected to give excellent long-life performance in a controlled AS2293 testing environment. Excessive battery cycling will reduce through-life performance and may lead to premature battery failure. Battery warranty claims, as a result of such abuse, are specifically EXCLUDED from Clevertronics warranty terms.

Warranty:

For Product Warranty information and Terms and Conditions of Sales please refer to our website <http://clevertronics.com.au/terms-conditions-sale-australia-nz>

Trouble Shooting:

Below are a list of common problems and their possible causes.

Fault: The Green LED Test Switch indicator is not illuminated.

Check: A.C. is connected and is turned on.
Battery is connected
Test Switch for damage.

Fault: Lamp does not illuminate in emergency mode.

Check: A.C. is connected.
Lamp is correctly inserted.
Battery is connected

Fault: Lamp illuminates in emergency mode, but only stays on for a short period.

Check: Battery has been allowed to charge for at least 24 hours.
Battery for damage.



LP™ Ultrablade Pro Surface Mount LED Exit

Installation & Maintenance Instruction Leaflet



Victoria (Head Office & Manufacturing)

195 Chesterville Rd
Moorabbin VIC 3189
Phone: +61 3 9559 2700
Fax: +61 3 9559 2799

New South Wales

Phone: +61 2 8805 6400
Fax: +61 2 8805 6444

Queensland

Phone: +61 7 3442 9700
Fax: +61 7 3442 9777

South Australia/Northern Territory

Phone: +61 8 8301 8800
Fax: +61 8 8351 8286


Western Australia

Phone: +61 8 9248 3720
Fax: +61 8 9248 3725

New Zealand

Phone: +64 800 548 448

Designed in Australia to comply with the requirements of AS2293.3:2005 and AS/NZ CISPR:15

NOTE: Standard product codes with this symbol  are enabled with Clevertest Plus capability. Please refer to the operation guide supplied with the product for details.


Models: CUBPRO-SM-ww-xx-yy-zz

Testing:

Manual Test xx = Blank
Zoneworks xx = ZW
ZW DATA xx = DATA
DALI Comp. xx = DALI
Clevertest xx = CT

Options:

Black Body yy = BLK
Theatre Decal ww = Theatre
Running Man zz = R
Running Man Right zz = RR
Running Man Left zz = RL
Double Side Running Man zz = DS-R

(NOTE: -CT Products supplied with the Clevertest Plus Symbol  are activated with Clevertest PLUS capability. Please refer to the operation guide supplied with the product for details).

Spare Parts:

1550105 – Battery, 3.2 Volt 1.1Ah Li-ion
8002178 – PCA: UBP LED strip PCB Assy
8002946 – PCA: PCA:C/LUBPRO-SM-TH-DS-R (for -TH-DS Option only)
8002945 – PCA: L/CUBPRO-SM #CT10142-L8 CTP

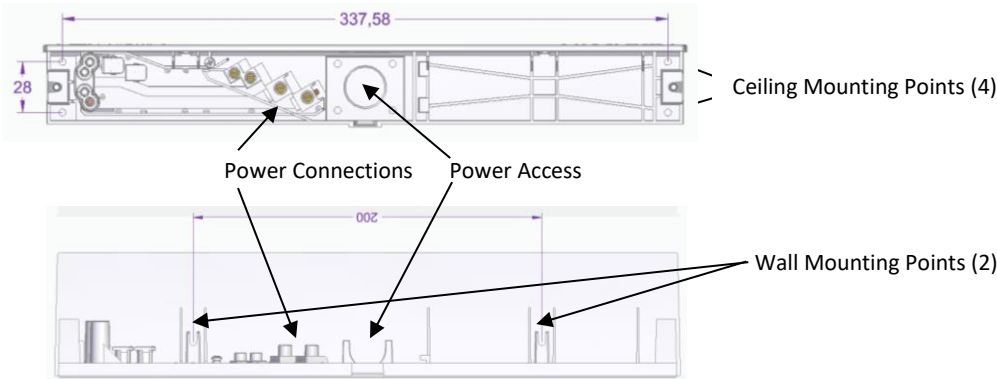
Important:

It is illegal for anyone, except for a licensed electrician to install or maintain this product. Before installation, ensure that the electricity supply has been switched off and isolated. Installation must be carried out in

Installation:

The LP Ultrablade Pro Surface Mount LED Exit (CUBPRO-SM) is a surface mount fitting. The CUBPRO-SM can be attached directly to any solid surface. Please follow the steps below to install the CUBPRO Exit:

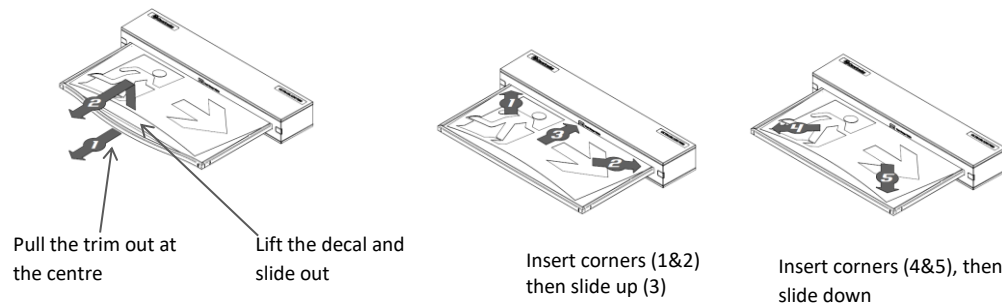
- Open the fitting using the 2 screws on either side of the blade.
- Locate the mounting surface.
- Drill holes in the mounting base to suit the mounting method, Ceiling or Wall (see images below).
- Use the mounting bracket to mark-out the mounting holes for Ceiling or Wall Mount.
- Drill power access hole as required.
- Mount the fitting using appropriate fixings.
- Route the power to the mains connection and connect the 240VAC supply.
- Attach the blade assembly to the bracket and tighten the 2 mounting screws.
- Apply power to the fitting and test.
- If the CTP capabilities are activated, please affix the CTP Status Label to a visible surface.



Changing EXIT Legend Inserts:

The Ultrablade Pro Exit comes with an assortment of standard legends.

1. To remove the legend, grasp the centre of the bottom trim piece and pull down slightly to expose the legend edge. See photo.
2. Grasp the bottom edge of the legend and slide the existing legend out of the blade, while working the edges out along the sides.
3. Slide the new legend into the blade, ensuring to fit the edges into the sides then slide the legend to the top of the blade. Insert one bottom corner then the other. Slide the legend down into the bottom trim.



Clevertest and Clevertest Plus

Refer to the supplementary operation guide supplied with the Product.

After Power ON, the Status LED on a Clevertest Plus enabled fitting will display a rapid Green or Red flashing for a period up to 2 minutes.

Zoneworks and DATA Monitored Options

Ultrablades with part numbers -ZW, -DATA are fitted with Zoneworks communications modules (nodes). These fittings are monitored using either Powerline Carrier Technology that utilises the power cable to provide data communication or a dedicated data cable to/from data routers installed on a dedicated data trunk connected to a central Server (can also be connected via Ethernet/Internet/Fibre). Zoneworks software on the server is used to monitor, coordinate testing and collate test data from each Ultrablade and can be commissioned by a single push of the test switch, or scanning of the supplied barcode. The LED Test Switch indicator provides a multifunction indication of the status of the Ultrablade during testing and normal operation:

State	LED Operation
Commissioned	LED on Solid (Green)
Un-commissioned	LED flashes at 0.5Hz (0.5s Green, 0.5s Yellow)
Emergency Light Test In Progress	LED flashes at 3s On (Yellow) & 0.5s Off

In the case of the DATA version a 2-way "figure 8" cable and terminal block facilitates the connection to the DATA network via a multi-drop bus (daisy chain connection). For further information of installation of a Zoneworks LW system, please refer to the Zoneworks Users Guide and Commissioning Guide (incl. DATA version)

DALI EM Option

Ultrablades with part numbers -DALI are fitted with DALI modules (nodes) that facilitate connection and integration to 3rd Party Lighting Control Systems. Before installing the -DALI fitting please confirm that the Lighting Control System has the capability to monitor DALI Emergency Luminaires. The -DALI fitting will be addressed and configured into the control system by the Lighting Control System Commissioning Technicians and not Clevertronics.

State	LED Operation
Commissioned/ Un-commissioned	LED on Solid (Green)
Emergency Light Test in progress	LED flashes at 1s On (Yellow) & 1s Off
"IDENTIFY COMMAND"	Fitting goes into emergency mode for 10 seconds

A 2-way "figure 8" cable and terminal block facilitates the connection to the DALI network. DALI connections are marked as Da Da.

Networking:

When installing the LP Ultrablade PRO on a monitored network, (ZONWORKS, DATA, DALI) simply insert the relevant Smart Node PCA.